



Premium Server Edition

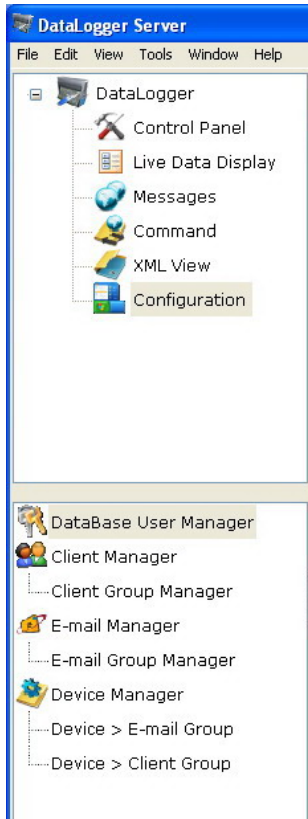
Server / Client

GS828 series

Highlights:

- Server Software
- Client Software
- Setup Software
- SDK tools
- UDP/TCP Testing tools

Get the "tools" on hand



Premium Server is designed to cover most of the applications in the market.

It gives a hassle free operation of GS828 GPRS Data Logger. Users do not need to worry about:

1. Receive data from Data Loggers via SMS and GPRS
2. Management of Server Setup
3. Detail display of data received by SMS
4. Detail display of data received by GPRS
5. Management of alarm messages
6. Delivery of command via SMS and GPRS
7. Management of database
8. Management of clients
9. Management of alarm by email, SMS and IP

10. Live Display of:

- Data received from data loggers
- Data Logger health status
- Command sent to data loggers
- Data sent to Clients
- Command received from Clients

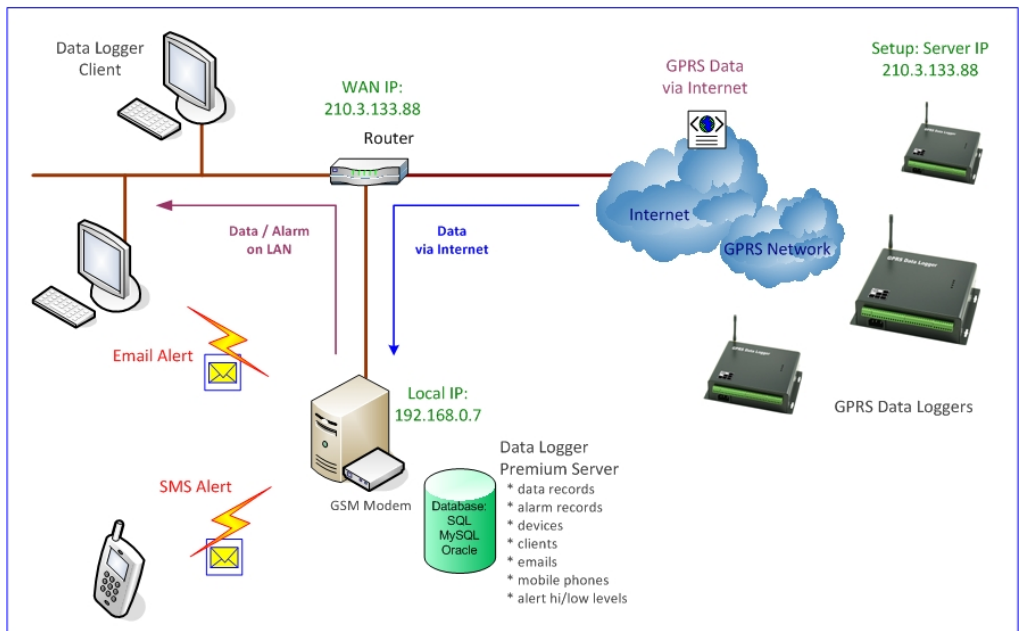
Major concern of users will be the way of displaying data.

No hassle again ...

Client Software tries to match the requirements of customers in all aspect.

Even though if bundled Client Software may not be the exact tool needed, users can develop their own client software with our SDK and demo software easily.

Schematics





Premium Server Edition

By GPRS:



By SMS:



By RS232:



Command via GPRS & SMS > remote setup

Device ID	Device Name	Delivery	Status	Schedule Time	Actual Time	Command
000001	Water_Pump	SMS	Sending	2009-07-20 02:55:00	2009-07-20 02:56:21	888888#ST:000003#
000001	Water_Pump	SMS	Complete	2009-07-20 02:55:00	2009-07-20 02:55:21	888888#SP:159141835491#
000001	Water_Pump	SMS	Complete	2009-07-20 02:50:00	2009-07-20 02:55:20	888888#ST:000003#
000001	Water_Pump	NET	Complete	2009-07-20 02:25:00	2009-07-20 02:59:50	888888#CP:1376025123511#
000001	Water_Pump	NET	Complete	2009-07-20 02:15:00	2009-07-20 02:49:56	888888#PA:012111100004#
000001	Water_Pump	NET	Complete	2009-07-20 02:10:00	2009-07-20 02:48:40	888888#AD:13,1,78,00,20,00#
000001	Water_Pump	NET	Complete	2009-07-20 02:08:05	2009-07-20 02:46:40	888888#SA-2#
000001	Water_Pump	NET	Complete	2009-07-20 02:05:22	2009-07-20 02:44:40	888888#AP:1,159141835491#
000001	Water_Pump	NET	Complete	2009-07-20 02:00:00	2009-07-20 02:16:38	888888#SD:04,0,1#
000001	Water_Pump	NET	Complete	2009-07-20 01:58:00	2009-07-20 01:58:40	888888#SA-1#
000007	Machine_Room	SMS	Complete	2009-07-18 16:00:00	2009-07-18 16:00:21	888888#ST:000011#
000000	Power_Station	NET	Complete	2009-07-15 04:22:20	2009-07-15 04:23:02	888888#TM:0907150422#

Supports sending command via:

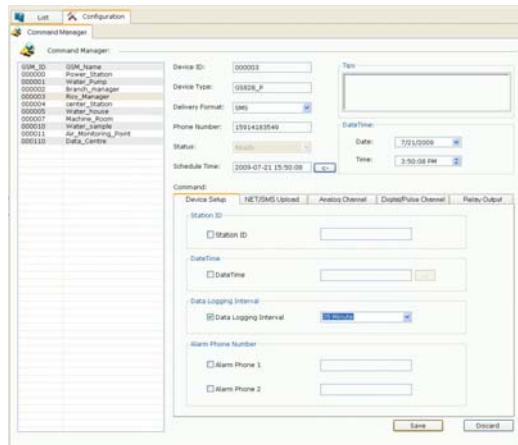
1. GPRS
2. SMS
3. RS232 Port

Remote Setup by GPRS or SMS command

- Screen Layout same as Local Setup Software
- Multi Data Loggers in batch and on schedule

Support multi data loggers:

1. Batch Command
2. Schedule Command
3. Instant Command
4. Clock Synchronization
5. Save Configuration File
6. Export Configuration File



Local Batch Configuration

Connection Setup

Port: COM1

Connection: 000001

Device Setup

No.	Status	Object	Parameters
01	Command Success	Station ID	000001
02	Command Success	Password	999999 - 888888
03	Command Success	Date / Time	09/28/14 12:31
04	Command Success	Data Logging Interval	15 Minute
05	Command Success	GPRS Upload Setup	15 Minute Live Data Record Count: 1
06	Command Success	SMS Upload Setup	Camera Number: 1500993245 Upload Interval: No Upload
07	Command Success	GSM Band Selection	900/1800
08	Command Success	Alarm Phone2	13744587899
09	Command Success	Access Point	CANET
10	Command Sending	Protocol	UDP
11	Ready	Server Port	9010
12	Ready	GPRS Server IP	218.17.142.0
13	Ready	Acknowledge Interval	0120
14	Ready	Reconnect Interval	0588
15	Ready	MOBUS Address	001
16	Ready	Humidity Sensor	157.8 0.000 0.000 1 100.0 5.000
17	Ready	Temperature Sensor_1	0 -60.00 20.00
18	Ready	Temperature Sensor_2	1 -20.00 -10.0
19	Ready	Analog Channel01	100.0 40.00 60.00 1 90.00 50.00
20	Ready	Analog Channel02	1.000 0.000 1.000 1 1.000 0.000
21	Ready	Analog Channel03	1.000 0.000 1.000 1 1.000 0.000
22	Ready	Analog Channel04	1.000
23	Ready	Analog Channel05	1.000
24	Ready	Analog Channel06	1.000
25	Ready	Analog Channel07	1.000
26	Ready	Analog Channel08	1.000
27	Ready	Analog Channel09	1.000
28	Ready	Analog Channel10	1.000
29	Ready	Analog Channel11	1.000

Easy Setup for larger number of data loggers:

- Configuration File Save
- Configuration File Import
- Batch Configuration
- Setup Status Display

Key Points:

This feature is a useful tool for installer. A large number of data loggers can be configured in batch.

Data can also be downloaded from data loggers via serial ports from a number of data loggers simultaneously.

Multi Data Loggers Data Download via RS232

Service

Device Information

Device Type: 05828 H/H2

Enquiry Password: 222555

Setup Password: 999999

Connection Setup

COM Port: []

Operation Status: []

Upload Interval: []

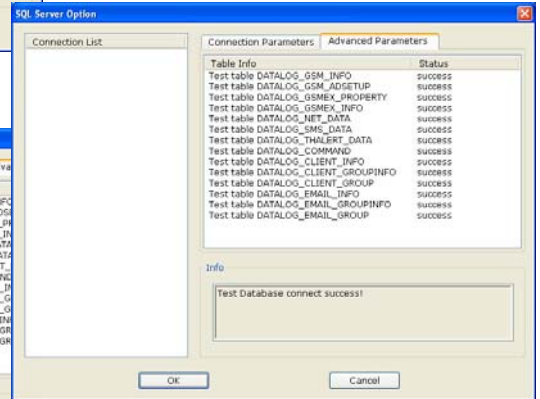
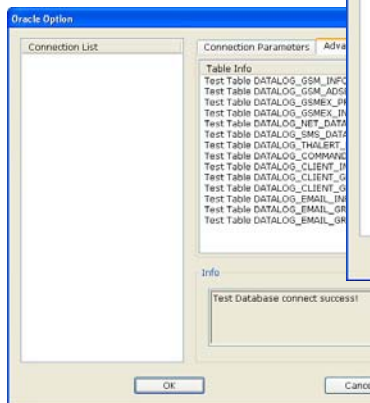
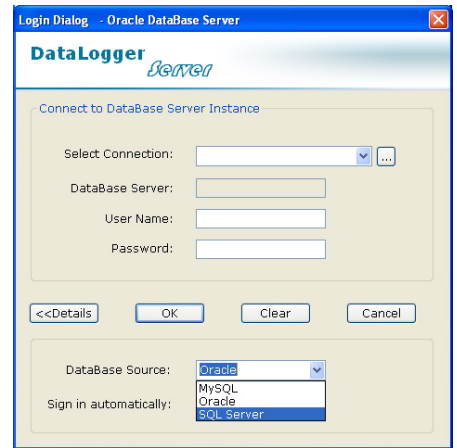
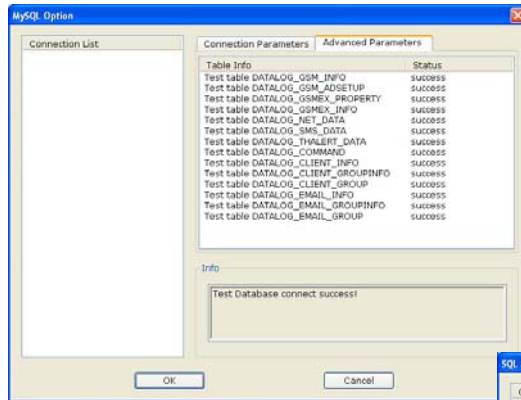
Active	COM Port	Device Type	Enquiry Password	Setup Password	Upload Modem	Upload interval	Device ID
<input checked="" type="checkbox"/>	COM 01	05828 H/H2	999999	888888	Command Mode	15 Minutes	222656
<input checked="" type="checkbox"/>	COM 02	05828 H/H2	555666	888888	Upload Mode	No Upload	
<input checked="" type="checkbox"/>	COM 03	05828 H/H2	999999	888888	Command Mode	15 Minutes	
<input checked="" type="checkbox"/>	COM 04	05828 H/H2	999999	888888	Command Mode	10 Second	
<input checked="" type="checkbox"/>	COM 05	05828 H/H2	222555	999999	Command Mode	20 Second	



Premium Server Edition

Tools in testing database connection are available for different database formats.

Database Selection



Decide the database format before installing the Premium Server Software

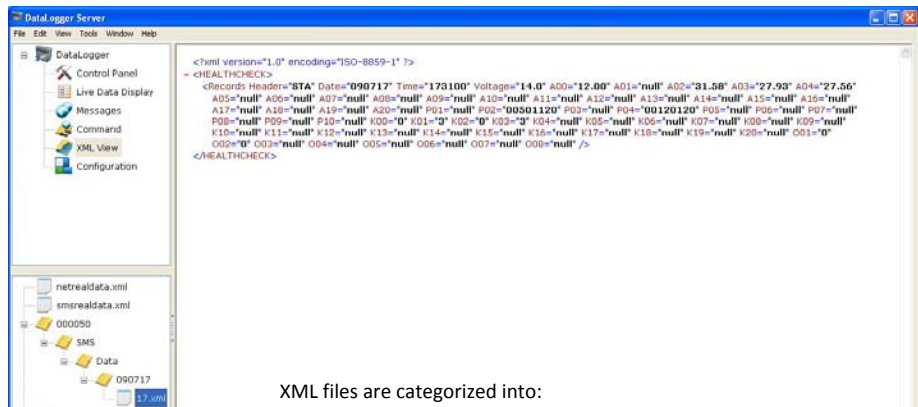
Data stored in XML for web client development

Key Points:

Options of different database formats MySQL/SQL/Oracle/MDB are available.

Once selected, data will be lost when database format is changed.

XML data is available no matter which database format is selected.

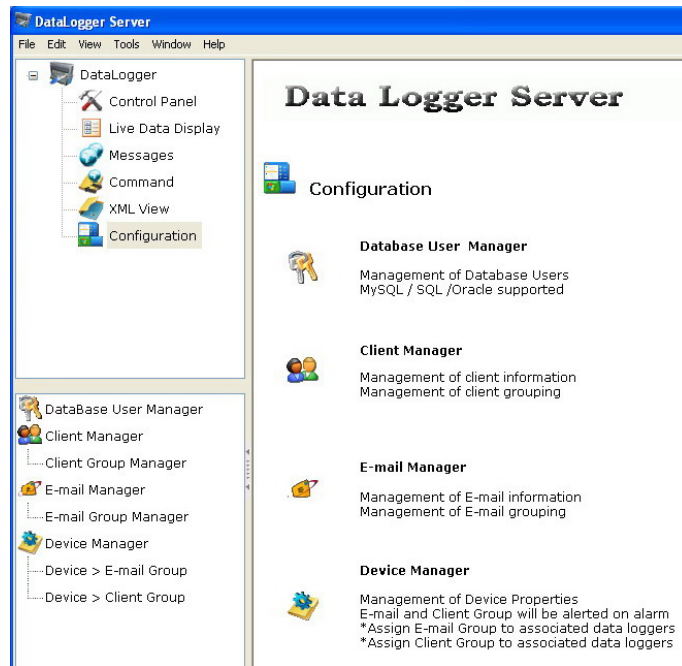


XML files are categorized into:

- Real Time Data via GPRS
- Real Time Data via SMS
- Scheduled Data via GPRS
- Scheduled Data via SMS
- Alarm Data via GPRS
- Alarm Data via SMS



Sophisticated Management



Manage the group of clients

Manage the privileges of database users

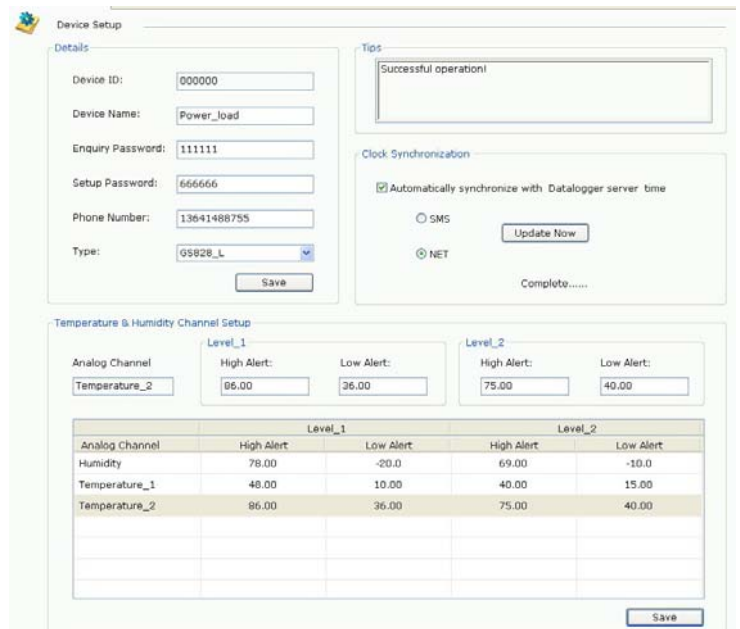
Manage the privileges of database users

Email & SMS Manager

Data Loggers Manager

- Server connected with GSM modem will be able to send SMS to assigned client groups.
- It will also be able to send emails to different client groups.
- Client Software will retrieve data from Server.
- Client will be alerted by email/SMS/TCP when it is assigned within the group.
- Clients will be assigned to monitor their own data loggers.

- Each Data Logger can be configured with its own alert levels, and properties.
- Each data logger will be assigned into groups.
- Alarm will be sent to user via SMS, email or IP.





What is difference between Centre Edition and Premium Edition?

Edition	Centre	Premium
[A] Server Software		
Receive Data via SMS	—	Yes
Receive Data via GPRS Data	Yes	Yes
Receive Data via RS232 Port	—	Yes
Live Data Display	Yes	Yes
Database	txt	MySQL/SQL/Oracle
XML	—	Yes
Data Export to Excel	—	Yes
Remote Command via SMS	—	Yes
Remote Command via Internet	—	Yes
Schedule Command	—	Yes
Batch Command	—	Yes
Temperature & Humidity Alert	—	Yes
Send Alarm Alert via TCP network	—	Yes
Send Alarm Alert via email	—	Yes
Send Alarm Alert via SMS	—	Yes
Alert Users Grouping	—	Yes
Alert Emails Grouping	—	Yes
Client Software support	—	Yes
Max. Data Loggers simultaneous support	99	9999
Data Loggers Management	—	Yes
User Authentication & Management	—	Yes
Network Client Authentication & Management	—	Yes
Web Based Access support	—	Yes
SDK for user development	—	Yes
[B] Client Software	N.A.	Bundled
Live Data Display	—	Yes
Alarm Alert	—	Yes
Graphic Display of Temperature & Humidity	—	Yes
Temperature & Humidity Hi/Low Alert	—	Yes
Historical Data Access	—	Yes

Centre Edition is bundled with data logger free. Premium Edition is sold separately.